

Native Bees of Barton Creek Habitat Preserve

Ground Nesting

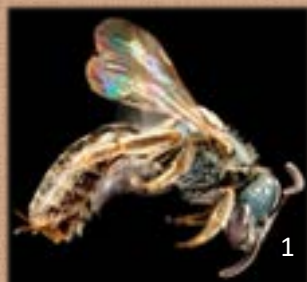
Lasioglossum spp.

Sweat bee

Solitary to social

Small

Very common to rare



Diadasia rinconis

Cactus bee

Solitary

Small-medium

Common



Agapostemon texanus

Metallic green bee

Solitary-communal

Small

Rare



Perdita ignota

Miner bee

Solitary

Small

Very rare



Augochloropsis metallica

Sweat bee

Facultative social

Small

Very rare



Cavity or Wood Nesting

Osmia subfasciata

Mason bee

Solitary

Medium

Common



Xylocopa virginica

Carpenter bee

Solitary

Large

Common



Megachile brevis

Leafcutter bee

Solitary

Medium

Rare



Megachile polycaris

Leafcutter bee

Solitary

Medium

Rare



Osmia conjuncta

Mason bee

Solitary

Medium

Very rare



Solitary: One female builds a nest and provisions her young alone

Communal: Several females share a nest but each one provisions her young alone

Social: Multiple females build the nest and provision their young together

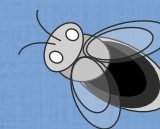


Small ± 10 mm

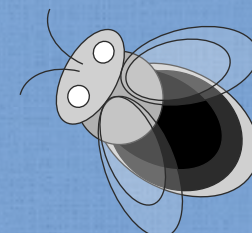


31 species

Medium ± 13 mm



Large ± 19 mm



Laurel Treviño & Shalene Jha

Native Bees of Barton Creek Habitat Preserve

31 native bee species

Agapostemon texanus
Anthophora californica
Apis mellifera (non native)
Augochloropsis metallica
Bombus pensylvanicus
Centris atripes
Diadasia rinconis
Dianthidium heterulkei
Halictus ligatus
Halictus tripartitus
Lasioglossum bardum
Lasioglossum bruneri
Lasioglossum coactum
Lasioglossum connexum
Lasioglossum disparile
Lasioglossum hudsoniellum
Lasioglossum semicaeruleum
Lasioglossum spp. (5)
Megachile brevis
Megachile polycaris
Melissodes tepaneca
Osmia conjuncta
Osmia subfasciata
Perdita ignota
Perdita sexmaculata
Pterosarus albitarsis
Svastra petulca
Xylocopa virginica

