

# Native Bee & Butterfly Pollinators

Brackenridge Field Laboratory, UT Austin

# How to Improve Bee Habitat

Nesting

Feeding

- **Sweat Bees**
  - Green: *Agapostemon* (2 species)
  - Augochloropsis metallica*
  - Striped: *Halictus ligatus*
  - Dark: *Lasioglossum* (6 species)
- **Mining & Digger Bee**
  - Andrena rudbeckiae*
  - Centris atripes*
- **Chimney Bees**
  - Ancylscelis apiformis*
  - Diadasia* (2 species)
- **Plasterer Bee**
  - Colletes texanus*
- **Long-horned Bee**
  - Melissodes* (4 species)
- **American Bumblebee**
  - Bombus pensylvanicus*
- **Squash Bee**
  - Peponapis pruinosa*
- **Sunflower Bee**
  - Svastra* (3 species)
- **Small Carpenter Bees**
  - Ceratina* (3 species)
- **Mason Bees**
  - Heriades variolosa*
  - Osmia subfasciata*
- **Leafcutter Bees**
  - Megachile* (6 species)
- **Cuckoo Bee**
  - Triepeolus concava*
- **Skipper Butterflies**
  - Euphyes vestris* (Dunn Skipper)
  - Lerema accius* (Clouded Skipper)
  - Lerodea eufala* (Eufala Skipper)
- **Brushfooted Butterfly**
  - Junonia coenia* (Buckeye)
- **Sulphur Butterfly**
  - Pyrisitia lisa* (Small Sulphur)
- **Swallowtail Butterfly**
  - Battus philenor* (Pipevine Swallowtail)

Dark sweat bee



Green sweat bee



Longhorn bee



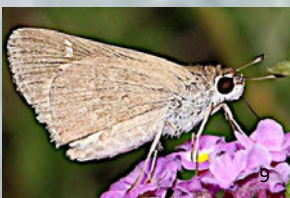
Sunflower bee



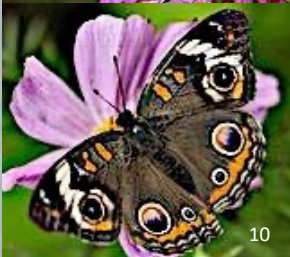
Leafcutter bee



Eufala Skipper



Common Buckeye



Small Sulphur



Pipevine Swallowtail



Leave woody areas for wood-nesting bees



Leave stems and leafy growth for cavity-nesting bees



Leave bare ground for ground-nesters' young to survive until spring

Maintain diverse native flower meadows blooming from April to August to provide bees with nectar & pollen



Blue sage



Sunflower



Bee balm

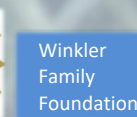
KEY

● Ground nesters

● Cavity or wood nesters

● Specialist larvae feed on few species in 1 plant family

● Generalist larvae feed on several species in > 2 plant families



Laurel Treviño, Kim Ballare, Shalene Jha, Ph.D.

