

Native Bees - Fort Worth Nature Center & Refuge

Ground Nesting

Lasioglossum imitatum

Sweat bee

Social

Very small

Common



Diadasia rinconis

Cactus bee

Solitary

Medium

Common



Halictus tripartitus

Sweat bee

Solitary to communal

Small

Common



Ashmeadiella buconis

Leafcutter bee

Solitary to communal

Small

Very rare



Svastra obliqua

Sunflower bee

Solitary

Large

Very rare



Cavity or Wood Nesting

Osmia subfasciata

Mason bee

Solitary

Medium

Common



Osmia texana

Mason bee

Solitary

Large

Very rare



Ceratina calcarata

Halictid bee

Solitary

Small

Very rare



Ceratina strenua

Carpenter bee

Solitary

Small

Very rare



Megachile inimica

Leaf-cutter bee

Solitary

Small

Very rare



Solitary: One female builds a nest and provisions her young alone

Communal: Several females share a nest but each one provisions her young alone

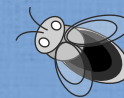
Social: Multiple females build the nest and provision their young together



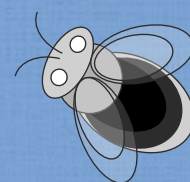
Small ± 10 mm



Medium ± 13 mm



Large ± 19 mm



40 species

Laurel Treviño & Shalene Jha

Native Bees - Fort Worth Nature Center & Refuge

40 native bee species

| | |
|-----------------------------|---------------------------|
| Agapostemon angelicus | Lithurgus gibbosus |
| Andrena melliventris | Megachile inimica |
| Apis mellifera (non native) | Megachile policularis |
| Ashmeadiella buconis | Megachile pugnata |
| Augochlorella aurata* | Melissodes communis |
| Ceratina calcarata | Melissodes tepaneca |
| Ceratina shinneri | Osmia conjuncta |
| Ceratina strenua | Osmia subfasciata |
| Colletes birkmanni | Osmia texana |
| Colletes mandibularis | Perdita coreopsidis |
| Diadasia afflicta | Svastra obliqua |
| Diadasia rinconis | Svastra petulca |
| Halictus parallelus | |
| Halictus tripartitus | *A. aurata (= A. striata) |
| Heriades variolosa | |
| Hesperapis infuscata | |
| Lasioglossum bruneri | |
| Lasioglossum callidum | |
| Lasioglossum coactum | |
| Lasioglossum cressonii | |
| Lasioglossum disparile | |
| Lasioglossum hudsoniellum | |
| Lasioglossum illinoense | |
| Lasioglossum imitatum | |
| Lasioglossum tegulare | |
| Lasioglossum spp. (3) | |