

Bees of Paul Mathews Prairie Nature Preserve

Ground Nesting

Lasioglossum spp.

Sweat bee

Solitary to social

Small

Common to rare



1

Bombus pensylvanicus

American bumblebee

Social

Large

Common



2

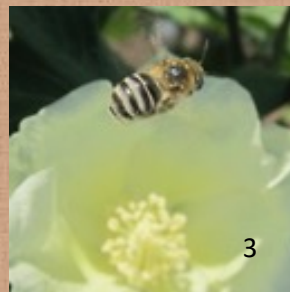
Melissodes tepaneca

Long-horned bee

Solitary - communal

Medium

Common



3

Agapostemon angelicus

Green metallic bee

Solitary-communal

Small

Very rare



4

Cavity or Wood Nesting

Xylocopa virginica

Carpenter bee

Solitary

Large

Very common



5

Megachile brevis

Leafcutter bee

Solitary

Medium

Common



6

Osmia texana

Mason bee

Solitary

Large

Rare



7

Ceratina spp.

Carpenter bee

Solitary

Small

Very rare



8

Solitary: One female builds a nest and provisions her young alone

Communal: Several females share a nest but each one provisions her young alone

Social: Multiple females build the nest and provision their young together

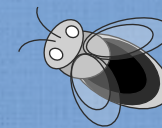


Small ± 10 mm

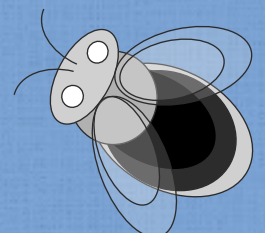


20 species

Medium ± 13 mm



Large ± 19 mm



Laurel Treviño & Shalene Jha

TNC Paul Mathews Prairie Nature Preserve

20 native bee species

Agapostemon angelicus

Agapostemon texanus

Andrena rudbeckiae

Apis mellifera (non native)

Bombus pensylvanicus

Ceratina calcarata

Ceratina strenua

Colletes birkmanni

Dianthidium curvatum

Lasioglossum disparile

Lasioglossum tegulare

Lasioglossum spp. (3)

Megachile brevis

Melissodes coreopsis

Melissodes tepaneca

Osmia texana

Perdita ignota

Svastra cressonii

Xylocopa virginica