

# Bees of Paul Mathews Prairie Nature Preserve

## Ground Nesting

*Lasioglossum spp.*

**Sweat bee**

Solitary to social

Small

Common to rare



1

*Bombus pensylvanicus*

**American bumblebee**

Social

Large

Common



2

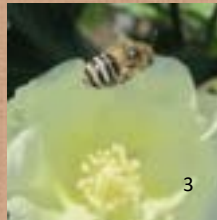
*Melissodes tepaneca*

**Long-horned bee**

Solitary - communal

Medium

Common



3

*Agapostemon angelicus*

**Green metallic bee**

Solitary-communal

Small

Very rare



4

## Cavity or Wood Nesting

*Xylocopa virginica*

**Carpenter bee**

Solitary

Large

Very common



5

*Megachile brevis*

**Leafcutter bee**

Solitary

Medium

Common



6

*Osmia texana*

**Mason bee**

Solitary

Large

Rare



7

*Ceratina spp.*

**Carpenter bee**

Solitary

Small

Very rare



8

**Solitary:** One female builds a nest and provisions her young alone

**Communal:** Several females share a nest but each one provisions her young alone

**Social:** Multiple females build the nest and provision their young together

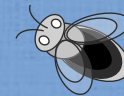


Small ± 10 mm

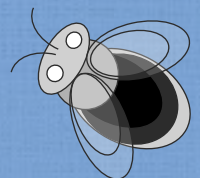


**20 species**

Medium ± 13 mm



Large ± 19 mm



Laurel Treviño & Shalene Jha

# Native Bees of Paul Mathews Prairie Nature Preserve

## 20 native bee species

Agapostemon angelicus  
Agapostemon texanus  
Andrena rudbeckiae  
Apis mellifera (non native)  
Bombus pensylvanicus  
Ceratina calcarata  
Ceratina strenua  
Colletes birkmanni  
Dianthidium curvatum  
Lasioglossum disparile  
Lasioglossum tegulare  
Lasioglossum spp. (3)  
Megachile brevis  
Melissodes coreopsis  
Melissodes tepaneca  
Osmia texana  
Perdita ignota  
Svastra cressonii  
Xylocopa virginica

