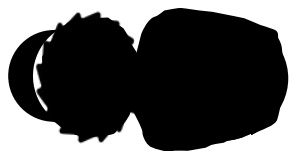


Seven typical forms & genera of native bees in Texas



Bombiform



Euceriform



Megachiliform



Apiform



Hylaeiform



Andreniform



Epeoliform

Bombi- form	Euceri- form	Megachili- form	Api- form	Hylaei- form	Andreni- form	Epeoli- form
Bombus	Eucera	Megachile	Apis	Hylaeus	Andrena	Epeolus
Xylocopa	Diadasia	Anthidiellum	Peponapis		Agapostemon	Triepeolus
	Melissodes	Anthidium	Xenoglossa		Augochloropsis	Coelioxys
	Svastra	Dianthidium			Augochlorella Halictus	
		Lithurgopsis			Lasioglossum	
					Nomia	
					Colletes	

Six typical genera of six Texas families



Laurel Treviño M.

Apis (Apidae)



Laurel Treviño M.

Megachile (Megachilidae)



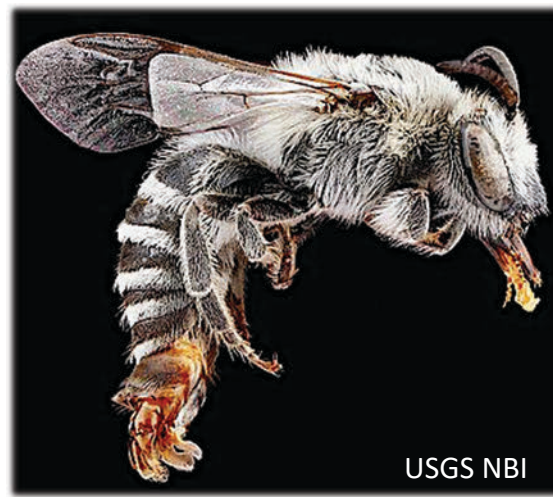
Laurel Treviño M.

Halictus (Halictidae)



Sam Droege

Andrena (Andrenidae)



USGS NBI

Colletes (Colletidae)



Dick Belgers

Melitta (Melittidae)

Common bees of six families in Texas

|----- Long-tongued -----| |----- Short-tongued -----|

Apidae	Megachilidae	Halictidae	Andrenidae	Colletidae	Melittidae
Bumble	Leafcutter	Sweat	Miner	Plasterer	Oil-collector
Carpenter	Carder	- tiny dark	- small	Cellophane	Cuckoo
Long-horned	Mason	- striped	- large	Cuckoo	
Cactus	Cuckoo	- green	(no cuckoo)		
Sunflower		Alkali			
Squash		Cuckoo			
Digger					
Cuckoo					

More common -----> to -----> less common in Central Texas gardens (2014)

Green sweat bee : Superfamily (Apoidea)

Family (Halictidae)

Tribe (Halictini)

Genus (*Agapostemon*)

Species (*texanus*)