

TEXAS NATIVE BEES

~20,000 native bee species live around the world, ~4,000 inhabit the U.S.
 ~1,000 species in all 6 families live in Texas (~1/4 US bee diversity)

Solitary carpenter bee (Apidae) females carve holes in soft wood for nests. Territorial males buzz but can't sting you.

Large - *Xylocopa*



Small - *Ceratina*



Solitary longhorn bees (Apidae) aggregate ground nests.

Melissodes

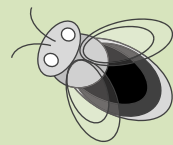
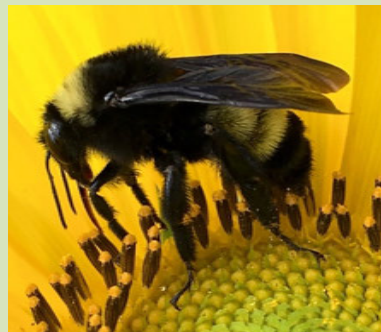


Sean McCann



Bumble bee queens (Apidae) share ground nests with 3 generations of daughters who help gather provisions.

Bombus



Solitary mining bees (Andrenidae) dig branched ground tunnels with turrets.

Egg on pollen bee loaf



Dennis Briggs

Colletes



Wikipedia

Plasterer bees (Colletidae) chew leaves to plaster nests they carve in pithy stems.



Nomada



John L. Neff

(Nomadinae)

Kleptoparasite females lay their eggs in other bees' nests, so their larvae consume the host's pollen provisions or larvae.

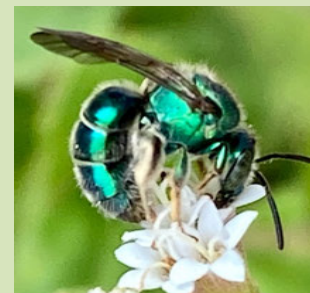


Sweat bees (Halictidae) lick salty sweat & make communal ground nests with separate incubation chambers.

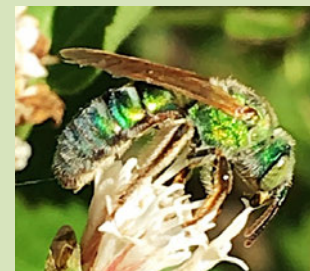
Lasioglossum



Augochlorella



Agapostemon



Scott Famous

Leafcutter bees (Megachilidae) line cavities with petals or leaves of forbs & grasses.

Megachile



Solitary blue orchard bees (Megachilidae) pollinate many kinds of fruit trees. Females retrofit cavities building mud (mason) walls between brood chambers.

Hesperapis



Lynette Schimming

Oil-collecting bees (Melittidae) mix plant oils with nectar & pollen.



Alkali bees can pollinate as much alfalfa as ~20 *Apis* honeybees.