

Native Bee & Butterfly Pollinators

Urban Roots Farm

How to Improve Bee Habitat

Nesting

Feeding

Dark Sweat bee



4

Green Sweat bee



5

Chimney bee



6

Long-horned bee



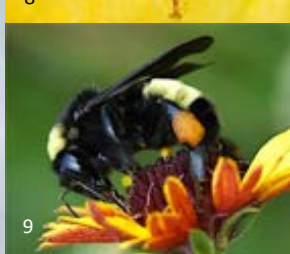
7

Large Squash bee



8

American Bumblebee



9

Eufala Skipper



10

Gray Hairstreak



11

Pearl Crescent



12

Small Sulphur



13

BEES

- **Sweat Bees**
 - Green: *Agapostemon angelicus*
 - Agapostemon texanus*
 - Augochloropsis metallica*
- **Striped:** *Halictus ligatus*
- **Dark:** *Lasioglossum* (6 species)
- **Digger/Mining Bees**
 - Anthophora capistrata*
 - Anthophora occidentalis*
- **Chimney Bees**
 - Ancyloscelis apiformis*
 - Ancyloscelis sejunctus*
 - Diadasia enavata*
 - Diadasia rinconis*
 - Perdita ignota isopappi*
 - Ptilothrix bombiformis*
- **Sunflower Bee**
 - Svastra grandissima*
- **Long-horned Bees**
 - Melissodes* (4 species)
- **Squash Bees**
 - Small: *Eucera pruinosa*
 - Large: *Eucera kansensis*
 - Large: *Eucera strenua*
- **American Bumblebee**
 - Bombus pensylvanicus*
- **Leafcutter Bee**
 - Megachile fortis*
- **Large Carpenter Bee**
 - Xylocopa virginica*
- **Cuckoo Bee**
 - Sphecodes sp.*

BUTTERFLIES

- **Skippers**
 - Anatrytone logan* (Orange)
 - Atalopedes campestris* (Sachem)
 - Euphyes vestris* (Dunn)
 - Lerema accius* (Dark/Clouded)
 - Lerodea eufala* (South./Eufala)
- **Gossamer-wing/Hairstreaks**
 - Strymon melinus* (Gray Hairstreak)
- **Brushfoots**
 - Phycoides tharos* (Pearl Crescent)
- **Sulphurs**
 - Pyrisitia lisa* (Small Sulphur)



1

Leave bare ground for ground-nesters' young to survive until spring



2

Leave stems and leafy growth for cavity-nesting bees



3

Leave woody areas for wood-nesting bees

Maintain diverse native flower meadows blooming from April to August to provide bees with nectar & pollen



Blue sage



Sunflower



Bee balm

○ KEY

● Ground nesters

● Cavity or wood nesters

● Specialist larvae feed on few species in 1 plant family

● Generalist larvae feed on several species in > 2 plant families



Winkler Family Foundation

Laurel Treviño, Kim Ballare, Shalene Jha, 2016

